

# CaBano

## #30413

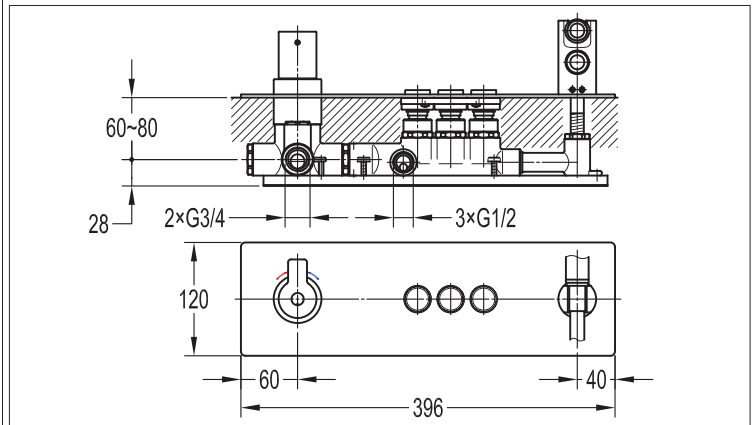
Thermostatic wall mount shower mixer with hand shower

### INSTALLATION GUIDE



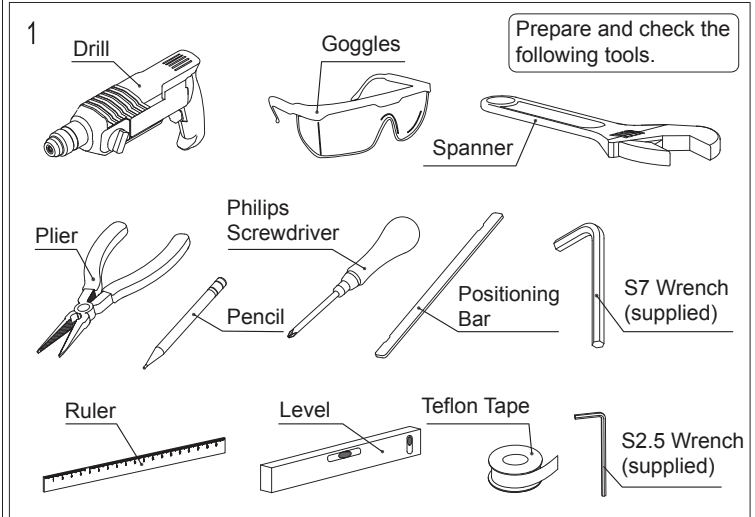
Last revision: October 23rd

### III. Installation Diagram



### IV. Installation Steps (Fig.1-23)\*

The installation diagram is only for reference. The product is subject to the real object.

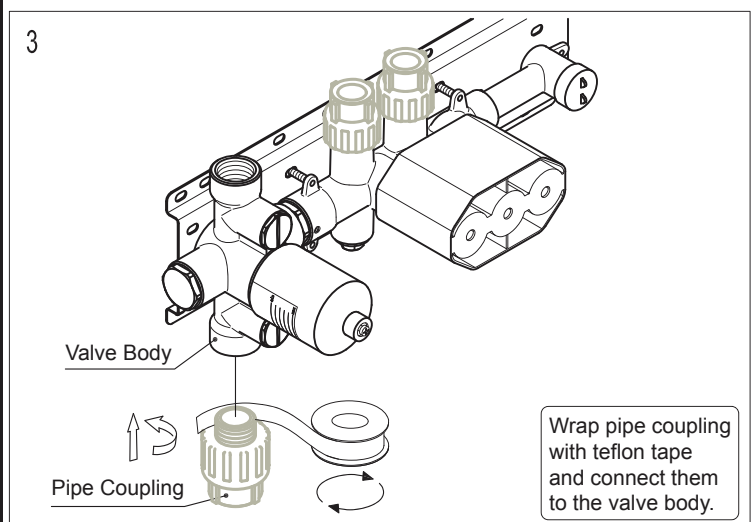
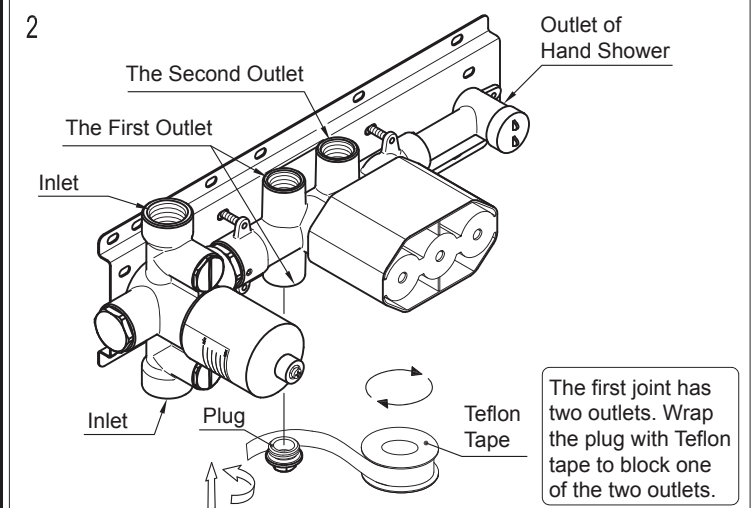


### I. Installation Notice

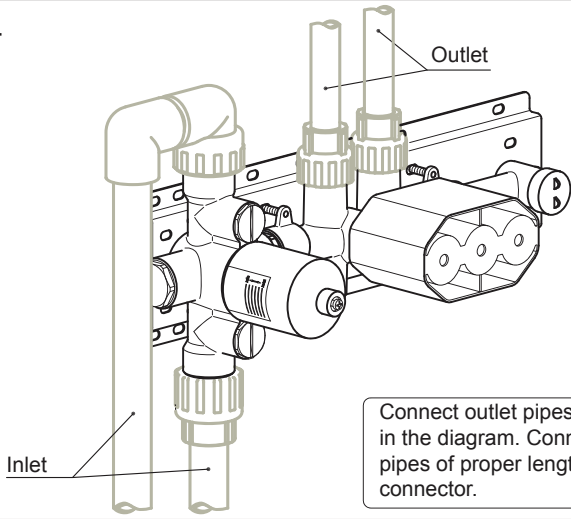
1. Please lay water pipes in accordance with this manual.
2. Floor drain should be installed on the site.
3. Mixers should be installed only after the completion of house interior decoration in case paint or other chemicals erode the mixer surface.
4. Clean pipes to get rid of mud, sand or other debris blocked in pipes before installation.
5. Check whether the threads can be matched. Otherwise, install forceful will damage the components.
6. After installation, check all the joints to make sure they are firmly connected. Then keep water flow. Turn on and off repeatedly to ensure no leaking problem. After that, the product is ready for normal use.
7. Hand the manual to users.

### II. Operation Notice

1. The product is used under cold water temperature 4~29°C, hot water temperature 55~85°C and water pressure 0.05~1.0 MPa. To avoid large pressure difference between hot and cold water, the thermostatic cartridge is preferably in use under the condition of water pressure 0.3 MPa, cold water 15°C, hot water 65°C. Main valve should be equipped with a filter.
2. Do not hang heavy things on the mixer.
3. Remember to turn off the mixer when no water comes out of it (especially when nobody in the house or during the decoration period or power off).
4. Clean the surface of mixer regularly to keep it bright. Note: Please do not use inappropriate tools such as sharp brushes, rough sponges, scouring pads or corrosive detergent. And it is not recommended to use the detergent sold in the market, because its formula changes frequently. Please clean the mixer with wet cloth and soapy water after some time of usage. Then rinse the soap off with clean water and dry with a soft cotton cloth.
5. When indoor temperature drops below 0°C, take necessary measures (keep mixer warm, close windows) to prevent the mixer from frost cracking (especially when windows are kept open for ventilation while nobody in the house).
6. Run cold water first and then run hot water, adjust the temperature before in use. Do not touch the hot water area of the mixer to avoid injury.
7. Do not disassemble the product without help from the professionals.

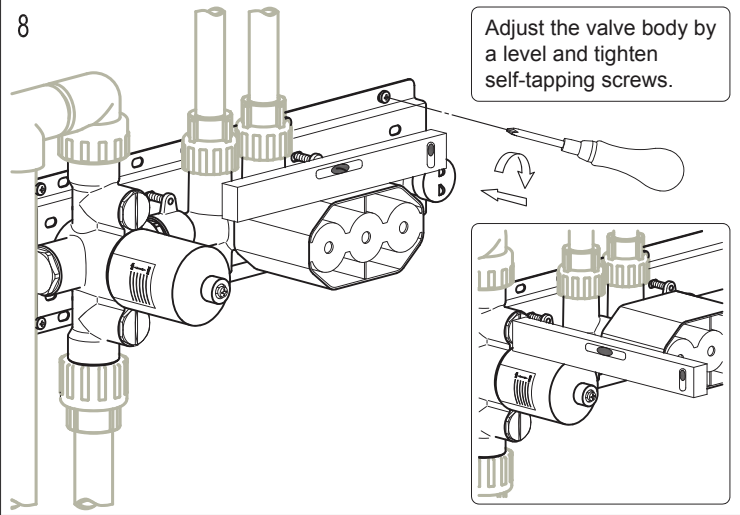


4



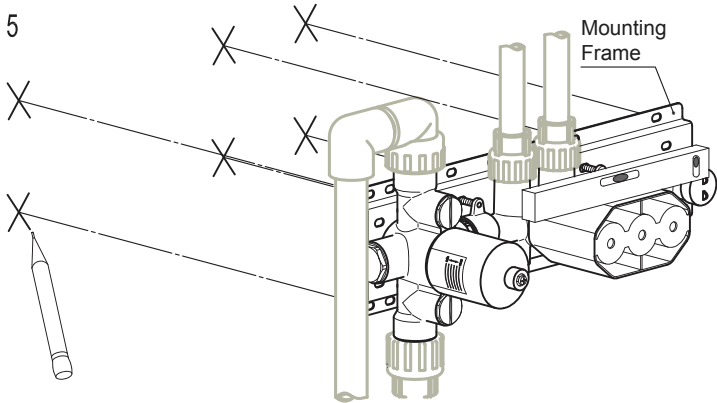
Connect outlet pipes as shown in the diagram. Connect inlet pipes of proper length to the inlet connector.

8



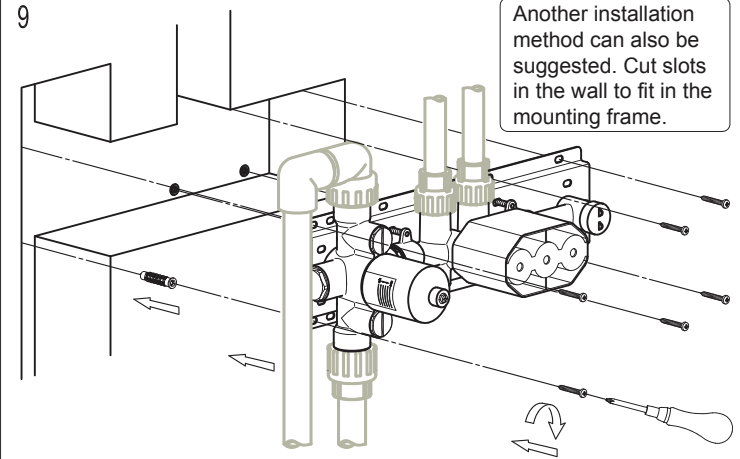
Adjust the valve body by a level and tighten self-tapping screws.

5



Use a level to adjust the valve body. Take the holes on the mounting frame as benchmark to make marks on walls.

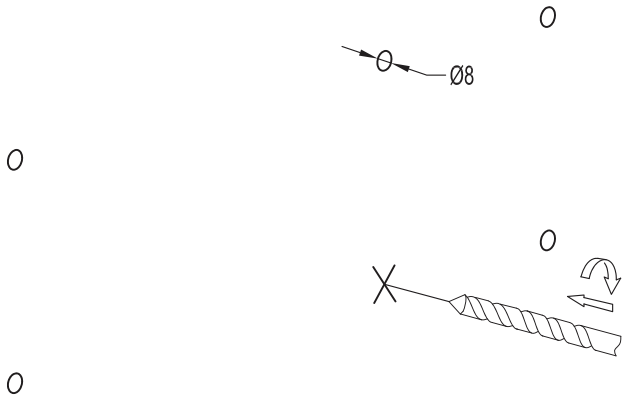
9



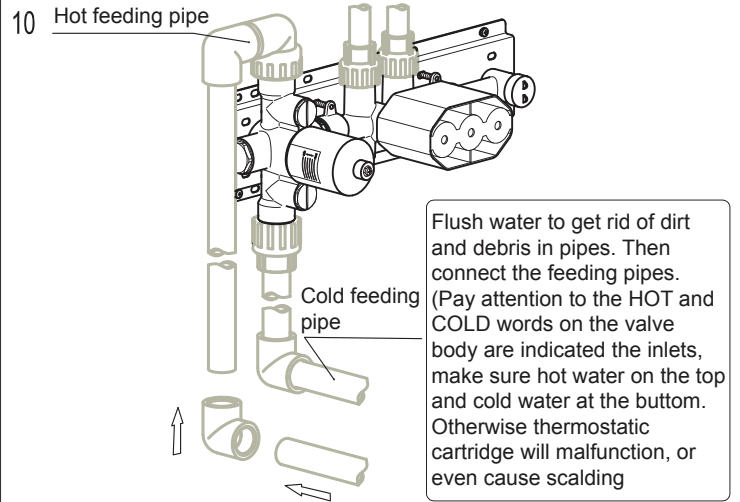
Another installation method can also be suggested. Cut slots in the wall to fit in the mounting frame.

6

Drill six Ø8 holes at marked positions



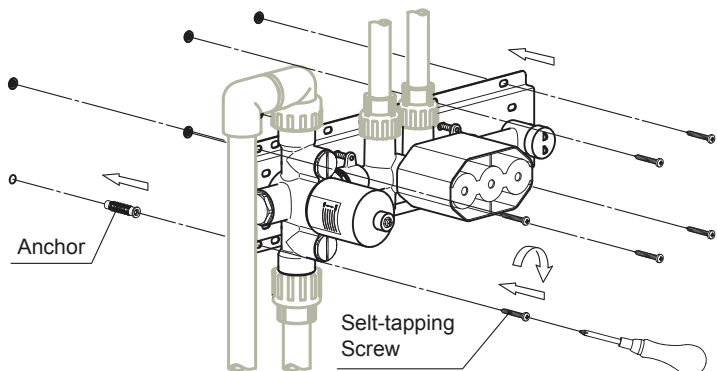
10 Hot feeding pipe



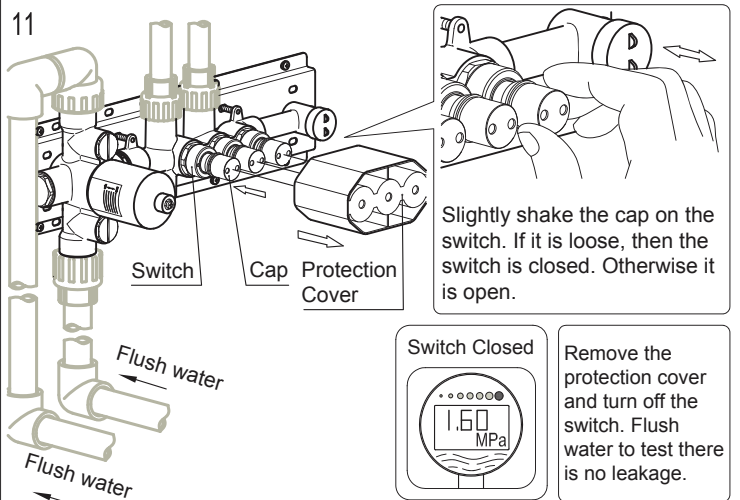
Flush water to get rid of dirt and debris in pipes. Then connect the feeding pipes. (Pay attention to the HOT and COLD words on the valve body are indicated the inlets, make sure hot water on the top and cold water at the bottom. Otherwise thermostatic cartridge will malfunction, or even cause scalding)

7

Insert anchors into Ø8 holes. lightly fix the valve body to walls by self-tapping screws.



11



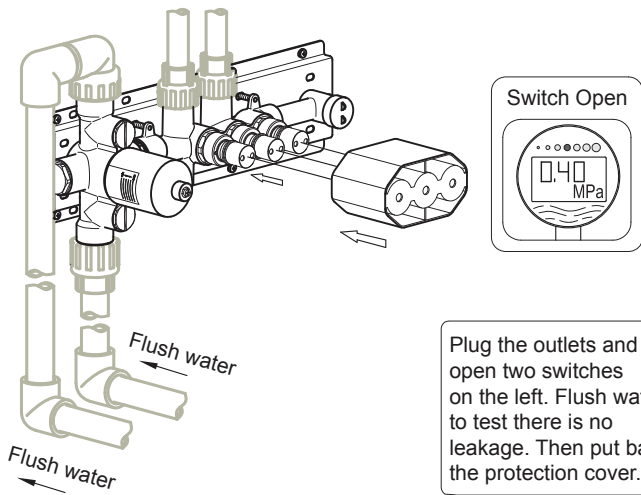
Slightly shake the cap on the switch. If it is loose, then the switch is closed. Otherwise it is open.

Switch Closed



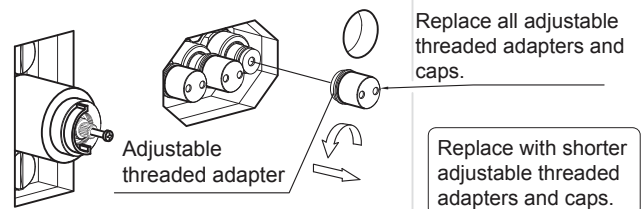
Remove the protection cover and turn off the switch. Flush water to test there is no leakage.

12

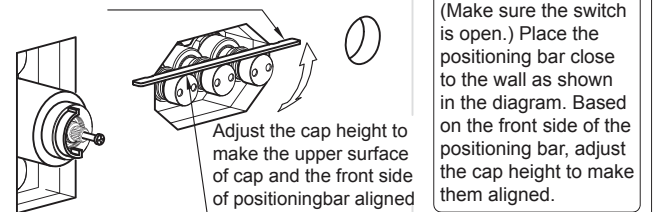


Plug the outlets and open two switches on the left. Flush water to test there is no leakage. Then put back the protection cover.

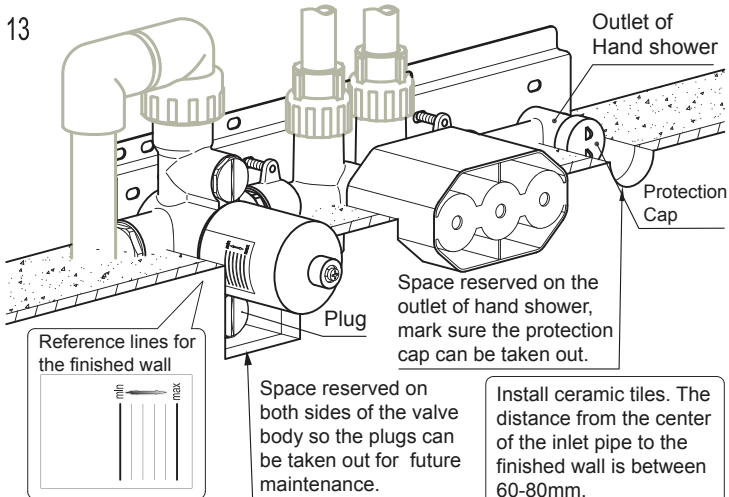
16



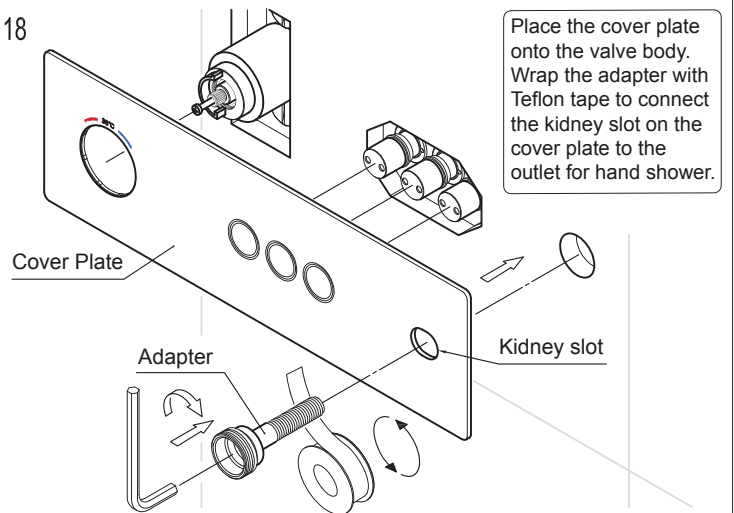
17



13

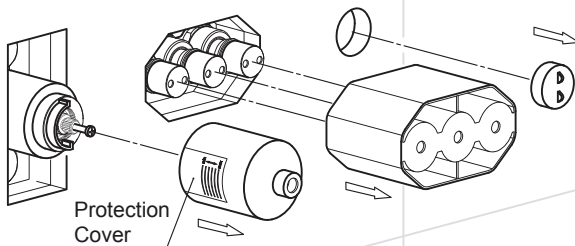


18

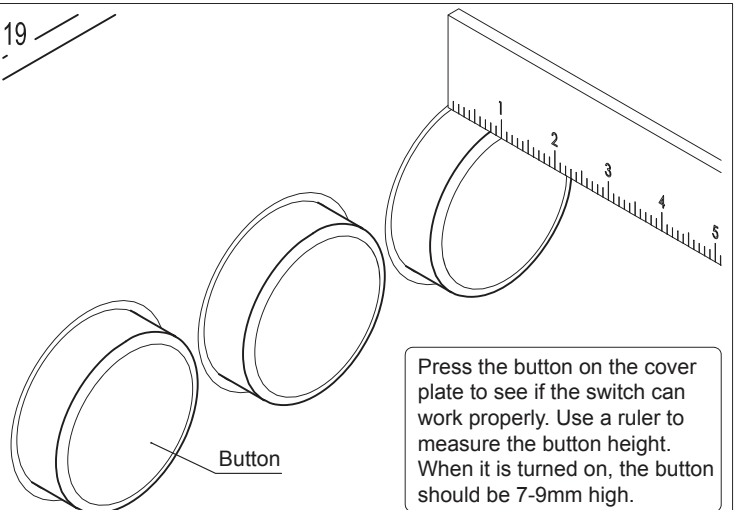


14

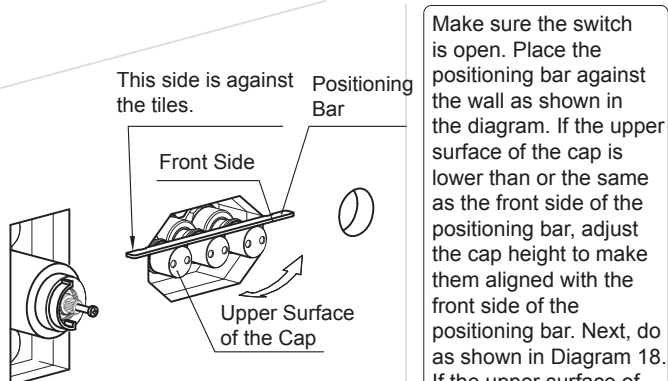
Remove protection sheath, cover and cap.



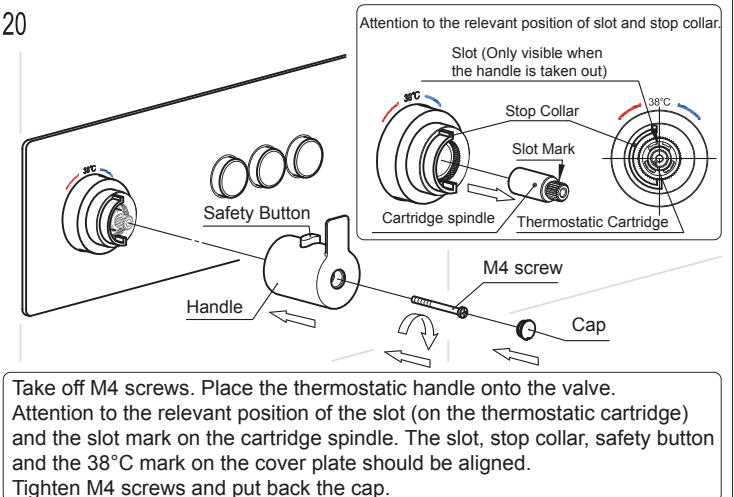
19

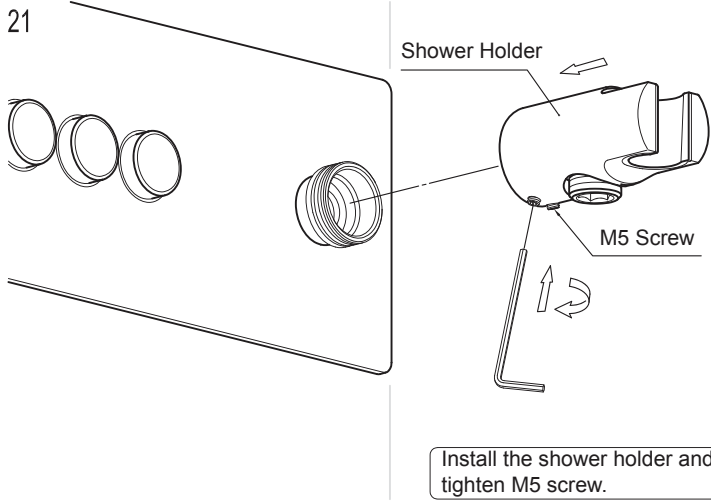


15

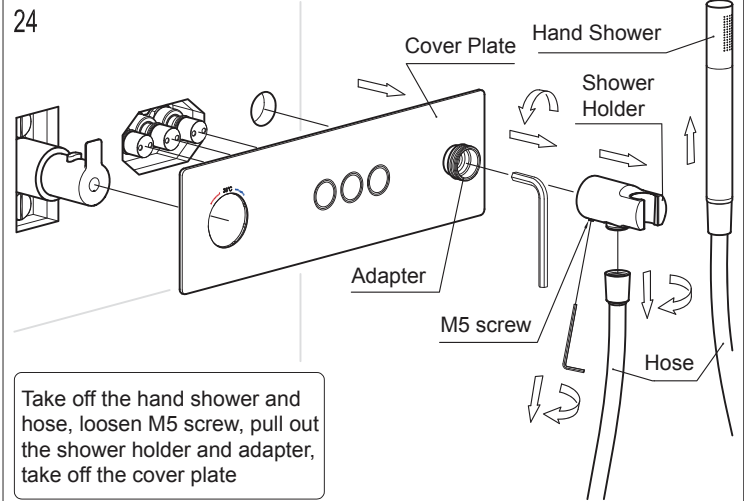


20

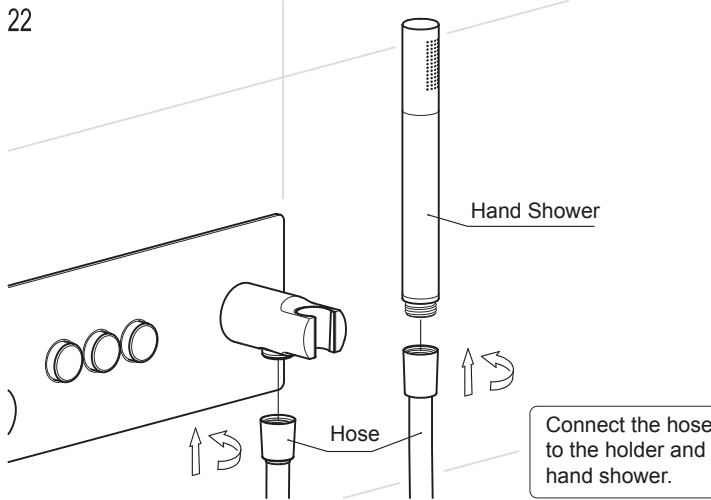




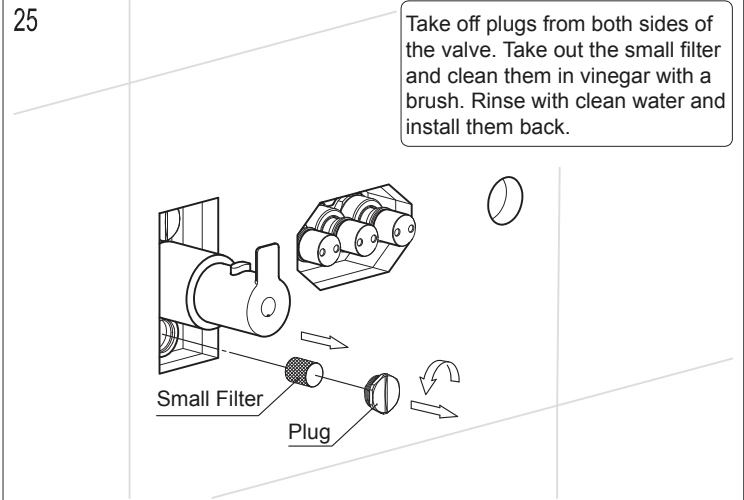
Install the shower holder and tighten M5 screw.



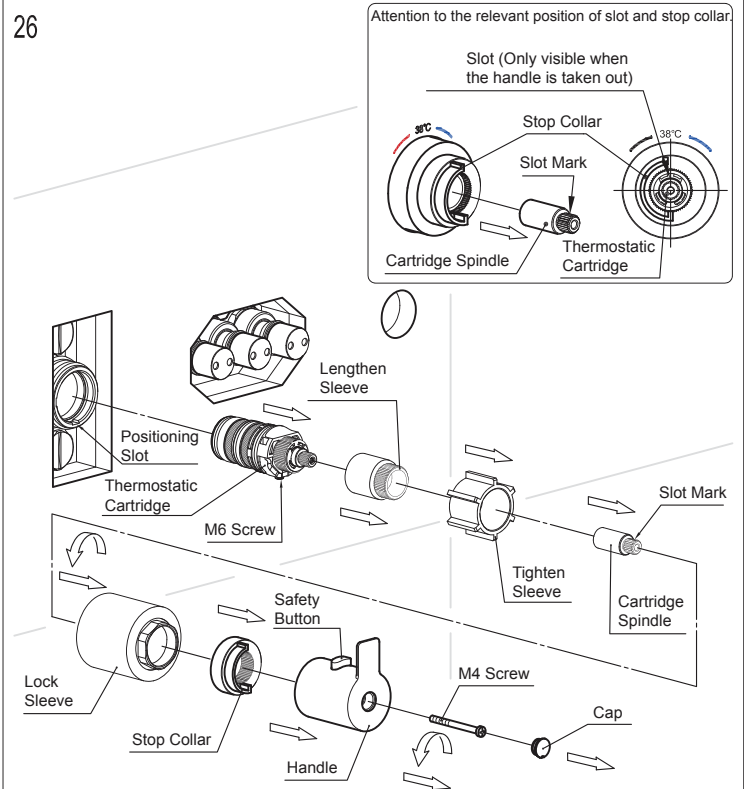
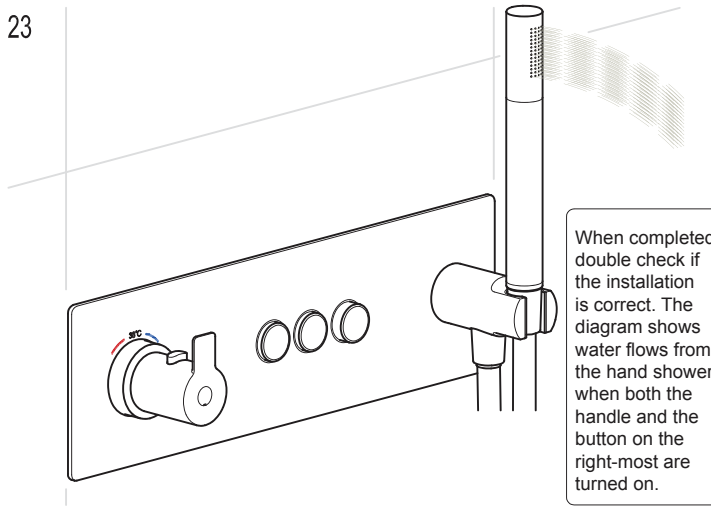
Take off the hand shower and hose, loosen M5 screw, pull out the shower holder and adapter, take off the cover plate



Connect the hose to the holder and hand shower.



Take off plugs from both sides of the valve. Take out the small filter and clean them in vinegar with a brush. Rinse with clean water and install them back.



Pick out the cap with a sharp tool. Remove the followings in order: M4 screws, handle, stop collar, lock sleeve, cartridge spindle, tighten sleeve, lengthen sleeve. Finally take out the thermostatic cartridge and clean the filter. Then assemble them back accordingly. Pay attention the M6 screw on the thermostatic cartridge should be vertically down and into the positioning slot of the thermostatic cartridge body. Keeping the four parts on one line: the slot on the thermostatic cartridge, stop collar, safety button and the 38°C mark on the cover plate.

## V. Maintenance

If the flow rate is lessened or temperature control is imprecise after a period of usage, it is possibly because water of poor quality blocks the small filters on both sides of the valve body or the filter on the thermostatic cartridge. Cleaning method should be taken as followed:

First, turn off the main inlet valve. Take out the small filters as shown in the Diagram 24-25. Then clean the small filters with vinegar and clean water using a brush. Assemble them back after cleaning. Double check the flow volume and temperature control.

If they are still not right, clean the filter of thermostatic cartridge as shown in the Diagram 26. Take out the thermostatic cartridge and clean the filter as before. Then assemble them back accordingly.